

# FORMAX<sup>®</sup>

Div. of BESCORP, Inc.

## AutoSeal<sup>®</sup> P2030

FOLDER/SEALER

### Standard Features:

- **Top Feed System:** Three roller system produces dependable feeding of forms.
- **Six-Digit Resetable Counter:** For maximum audit control.
- **Paper Jog Control:** Allows operators to jog forms through before operation.
- **14" Form Length Capability:** Flexibility to process even panel forms up to 14" in length.\*\*
- **Desktop Design:** A sleek desktop design made with office usage in mind.
- **L.E.D. Indicators:** Notifies an operator when the power is on, a cover is open, the paper runs out and if a fault occurs.
- **Conveyor with Photo Eye:** Allows for neat and sequential stacking.
- **Cabinet:** Fully enclosed for storage.
- **Noise Reduction:** Top and side covers are insulated to reduce operating noise.

### Options:

- **FD 400 Jogger:** Reduces static electricity and aligns forms for proper feeding.

*\*\* All uneven paneled 14" forms must be factory approved prior to equipment sale.*



The P2030 AutoSeal<sup>®</sup> desktop folder/sealer provides a reliable and compact solution for processing pressure sensitive self-mailers. Standard features include a six-digit counter, jog control, fault detection, L.E.D. indicators and an operator friendly touch-pad. Up to 200 forms can be loaded in the hopper and processed at speeds up to 9,000 per hour. All of these features make the P2030 the perfect solution for streamlining your post processing. The P2030 comes standard with a fully enclosed cabinet for storage and a conveyor with photo eye for neat and sequential stacking of processed forms.

**FORMAX** A Division of Bescorp, Inc.

New Hampshire, USA

Web Site: [www.formax.com](http://www.formax.com)

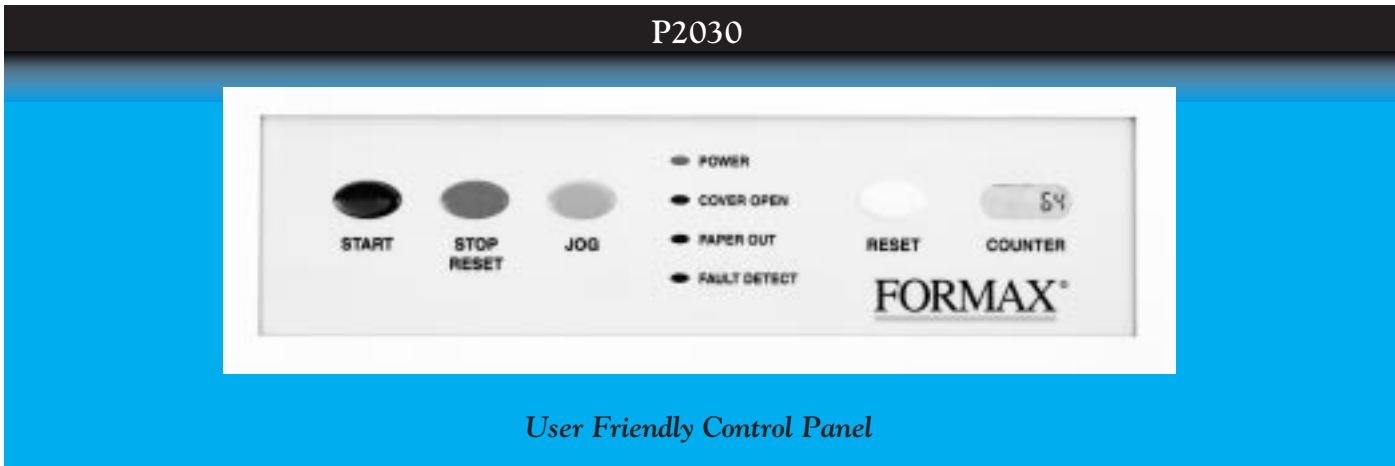
**LOCAL DEALER:**

## Flexible

The P2030 handles a variety of documents up to 8 1/2" x 14" including checks, invoices, school reports, tax forms and appointment notices. Pressure seal mailers can be used for virtually any application that can be printed on one form.

## Powerful

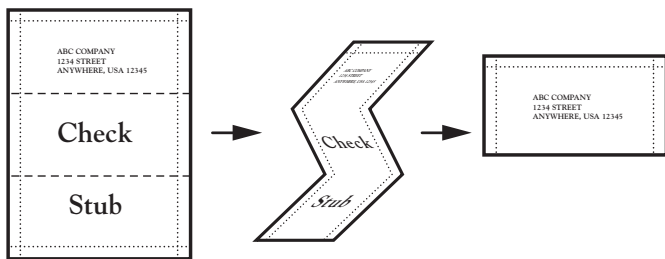
The P2030 processes forms at a rate of up to 9,000 sheets per hour and can hold up to 200 - 24# forms in the feed hopper. Combined with a duty cycle of up to 75,000 forms per month the P2030 offers the ultimate solution for streamlining your in office paper processing.



*User Friendly Control Panel*

## Pressure Seal Solution

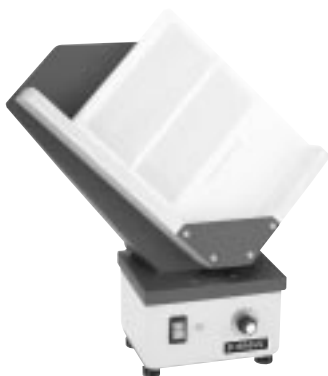
The AutoSeal P2030 combined with a simplex printer and pressure seal forms create a secure, cost effective and time saving paper processing solution.



*Standard Z-Fold Process*

## Ease of Operation

The P2030 is set up for user friendly operation. Simply set your folds according to the clearly marked settings on the fold plates, load your forms, press start and you're on your way. The P2030 has indicators for power on, fault detection, paper out and cover open for operator convenience. It also includes a six-digit counter for audit control.



The **FD 400 Jogger** is a recommended option that reduces static electricity from forms and aligns them for proper feeding.

SPECIFICATIONS	Hopper Capacity:	200 Sheets 24#
	Fixed Speed:	Up to 9,000 sheets per hour
	Paper Size:	Up to 8 1/2" x 14"
	Power:	120 Volts AC 50/60 HZ
	Duty Cycle:	75,000 per month
	Dimensions:	45" L x 20" W x 44" H (Includes Conveyor & Cabinet)
	Weight:	179 lbs.
	Certifications:	UL and CUL approved CE applied for

U.S. Patents 5,772,841, 5,865,925, 5,968,308 & 6,264,592 Other Patents Pending